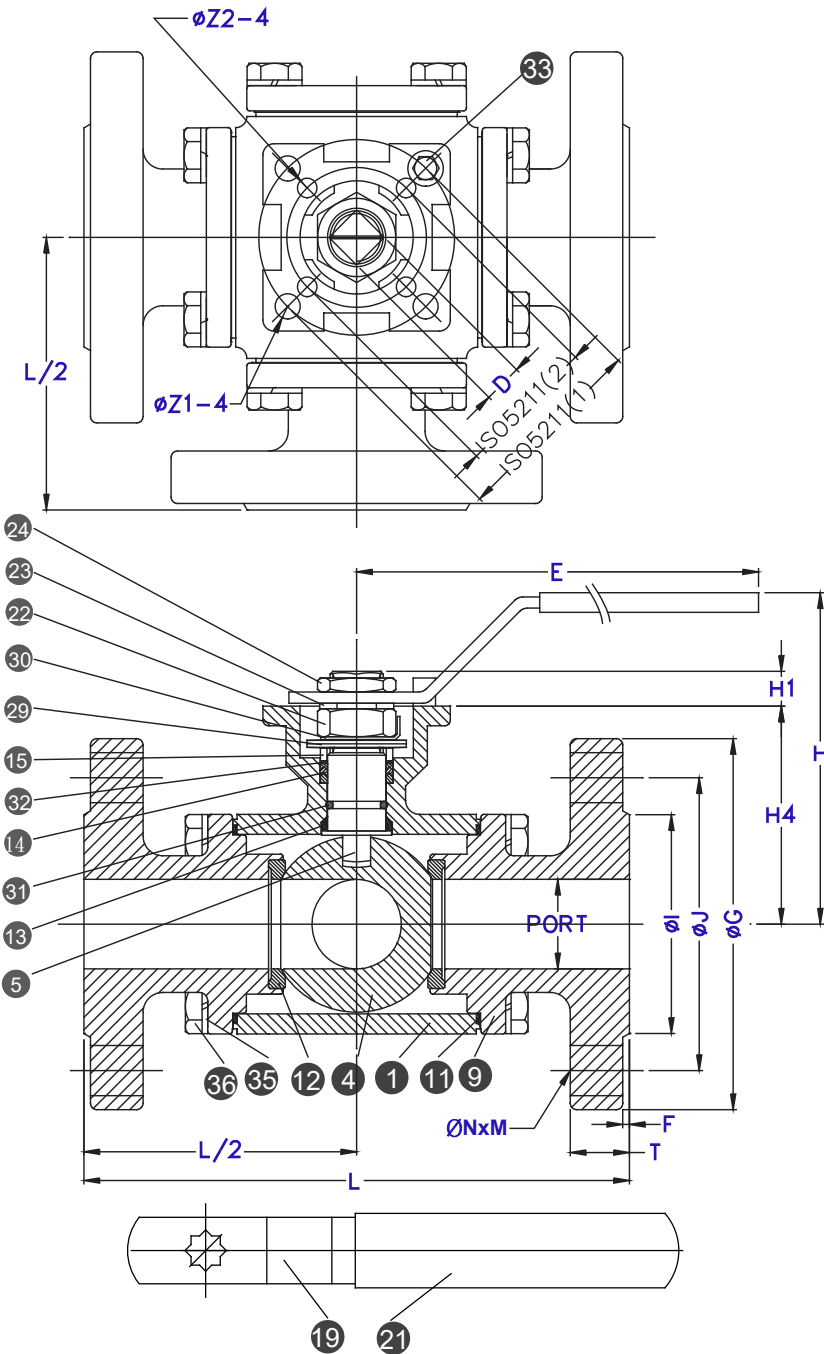




MODEL: BA-L(T)AH 法蘭口三通球塞閥 **CLASS 150**

Three-Way Flange End Full Port Ball Valve Class 150 ISO 5211 Direct Direct Mounting Pad



FEATURES :

1. Investment Casting
2. FLANGE: ASME B16.5 CLASS 150
3. ADJUSTABLE STEM PACKING
4. FLOATING BALL
5. LOCKING LEVER HANDLE AVAILABLE
6. ISO5211 Directing Mounting Pad
7. T Port OR L Port

MATERIAL LIST :

NO.	PART NAME	MATERIAL
1	BODY	ASTM A351 Gr.CF8M
4	BALL	ASTMA351 Gr.CF8M
5	STEM	SS316
9	END CAP	ASTM A351 Gr.CF8M
11	BODY SEAL	PTFE.
12	SEAT	PTFE.
13	THRUST WASHER	PTFE.
14	STEM PACKING	PTFE.
15	GLAND	SS304
19	HANDLE	SS304
21	HANDLE COVER	PLASTIC
22	STEM NUT	SS304
23	HANDLE WASHER	SS304
24	HANDLE NUT	SS304
29	BELLEVILLE WASHER	SS410
30	STOP WASHER	SS304
31	O-RING	VITON
32	PACKING FOLLOWER	PTFE.+25%GF
33	STOP PIN	SS304
35	BOLT	SS304
36	BOLT WASHER	SS304

TEST PRESSURE :

TYPE	PRESSURE	
	UNIT: PSI	
SHELL TEST (WATER)	413	
SEAT TEST (WATER)	303	
SEAT TEST (AIR)	85	

TURN PORT	TURN			
	0°	90°	180°	270°
L				
T				

DIMENSIONS :

SIZE	PORT	L	E	H1	H	H4	C	G	J	I	T	F	M	N	Z1	Z2	ISO 5211	
1/2"	16.0	147.2	186.5	9.0	89.0	47.8	9.0	89.0	60.5	35.0	11.1	1.60	4	16	6.0			42 F04
3/4"	20.0	153.5	218.0	11.0	98.0	58.2	9.0	98.6	70.0	43.0	11.1	1.60	4	16	7.0			50 F05
1"	25.0	169.0	218.0	11.5	102.0	64.0	9.0	108.0	79.2	51.0	11.1	1.60	4	16	7.0			50 F05
1-1/4"	32.0	192.5	235.0	15.2	118.5	79.0	14.0	117.5	88.9	63.5	12.7	1.60	4	16	9.0	7.0		50 F05 70 F07
1-1/2"	38.0	214.6	235.0	14.3	127.0	88.5	14.0	127.0	98.6	73.2	14.3	1.60	4	16	9.0	7.0		50 F05 70 F07
2"	50.0	221.0	252.0	17.8	139.0	105.8	17.0	152.5	120.7	92.0	15.9	1.60	4	19	11.0	9.0		70 F07 102 F10

UNIT:MM